

Note!

Before installing this product, check the contents of the kit. If anything is missing, please contact an Öhlins dealer.

Kit Contents

Description	Part No	Pcs
Shock absorber	KA110019	1
Sticker Öhlins	00192-01	2
C-spanner	00710-01	1
Owner's manual	07241-02	1

Note!

Please note that this image is a general representation of the product and may differ slightly from your product.

Note!

Please note that during storage and transportation, especially at high ambient temperature, some of the oil and grease used for assembling may leak and stain the packaging. This is in no way detrimental to the product, wipe off the excessive oil/grease with a cloth.

Warning!

Before installing this product, read the Öhlins Owner's Manual. The shock absorber is an important part of your vehicle and will affect the stability.

Shock Absorber for Kawasaki KLX150

KA110019

Mounting Instructions

MOUNTING INSTRUCTIONS

⚠ Warning!

It is advisable to have an Öhlins dealer install the shock absorber.

⚠ Warning!

If working on a raised vehicle, ensure it is securely supported so that it will not tip over.

👁 Note!

Before mounting this product clean the vehicle thoroughly.

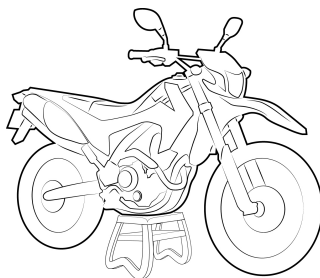
👁 Note!

When working on this product, always see the Vehicle Service Manual for vehicle specific procedures and important data.

1

Put the motorcycle on a workstand so that rear wheel barely touches the ground.

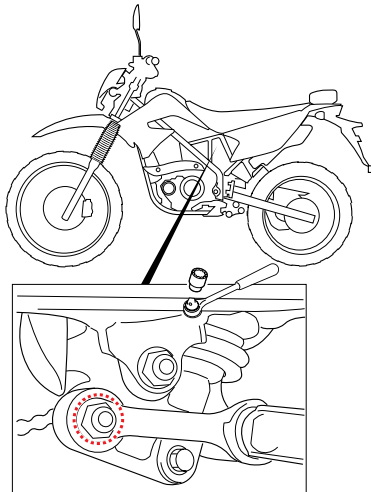
1



2

Release the tie-rod by removing the bolt .

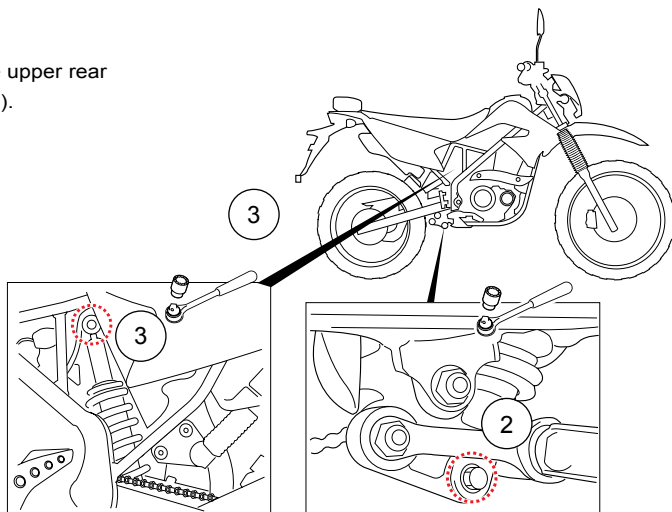
2



MOUNTING INSTRUCTIONS

3

Remove the lower and the upper rear shock absorber bolts (2)(3).



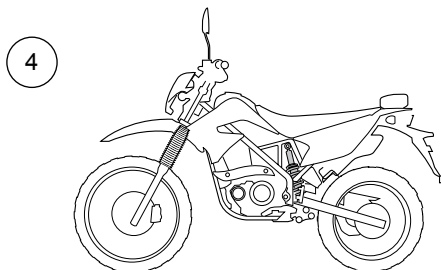
4

Lift the swing-arm.

Remove the standard shock absorber.

Lower swing-arm (Safely).

Install Ohlins shock absorber and reverse all of procedures.



Note!

Lower the vehicle so that the suspension is slightly compressed before tightening the screws.

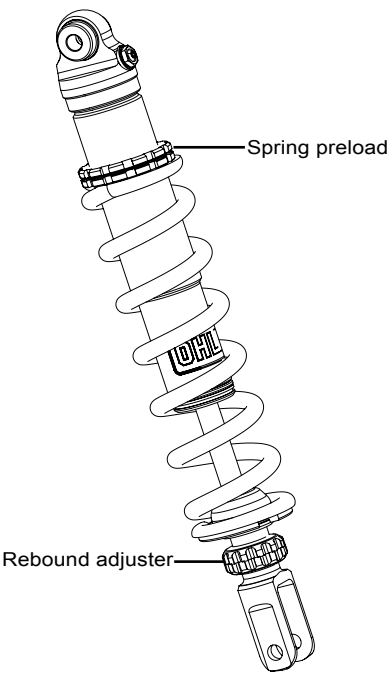
Caution!

Ensure that all screws are tightened to the correct torque and that nothing fouls or restricts movement of the shock absorber when the suspension is fully compressed or extended.

ADJUSTMENTS

⚠ Warning!

Before riding, always make sure that the basic settings made by Öhlins are according to recommended Set-up Data. Read about adjustments and setting up in the Öhlins Owner's Manual before you make any adjustments. Contact an Öhlins dealer if you have any questions about setting up.



SET-UP DATA

Recommended set-up		Shock absorber data	
Spring Preload	12 mm	Length	403 mm
Rebound Adjuster	14 clicks	Stroke	83.5 mm
Spring			
Part No	60281-20		
Free spring length	240 mm		
Prelaad adjustment range	[0-26.5] mm.		

👁 Öhlins products are subject to continuous improvement and development, therefore, although these instructions include the most up-to-date information available at the time of printing, minor updates may occur.

To find the latest information contact an Öhlins distributor. Please contact Öhlins if you have any questions regarding the contents in this document.

Part no. MI_KA110019_EN_5
Issued 2016-02-08

© Öhlins Asia Co., Ltd. All rights reserved. Any reprinting or unauthorized use without the written permission of Öhlins Asia Co., Ltd is prohibited.

Öhlins Asia Co., Ltd
Amata Manson 700/1000 Moo1
Tambol Klongtamru,
Amphur Chonburi, Chonburi 20000,
Thailand



www.ohlins.com